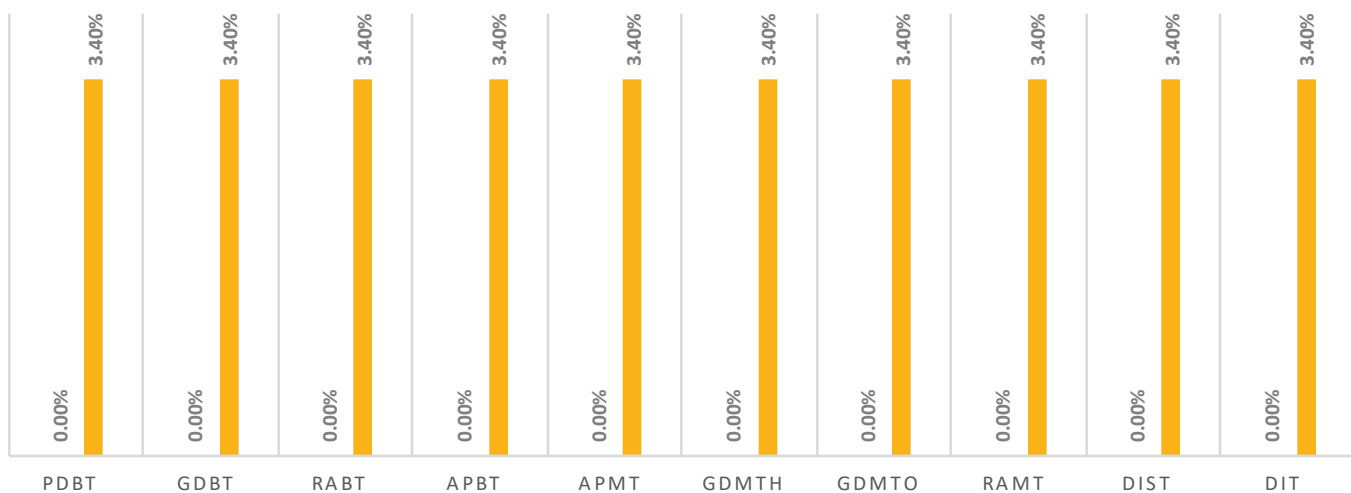


TARIFAS DE LA CFE APLICABLES EN 06.2019
CARGO FIJO

REGIÓN	PDBT	GDBT	RABT	APBT	APMT	GDMTH	GDMTO	RAMT	DIST	DIT
BAJA CALIFORNIA	67.77	677.66	67.77	67.77	677.66	677.66	677.66	677.66	2,032.99	2,032.99
BAJA CALIFORNIA SUR	67.77	677.66	67.77	67.77	677.66	677.66	677.66	677.66	2,032.99	2,032.99
BAJIO	45.10	451.04	45.10	45.10	451.04	451.04	451.04	451.04	1,353.12	1,353.12
CENTRO OCCIDENTE	39.57	395.68	39.57	39.57	395.68	395.68	395.68	395.68	1,187.03	1,187.03
CENTRO ORIENTE	44.31	443.13	44.31	44.31	443.13	443.13	443.13	443.13	1,329.39	1,329.39
CENTRO SUR	49.06	490.63	49.06	49.06	490.63	490.63	490.63	490.63	1,471.89	1,471.89
GOLFO CENTRO	46.31	463.05	46.31	46.31	463.05	463.05	463.05	463.05	1,389.15	1,389.15
GOLFO NORTE	54.25	542.53	54.25	54.25	542.53	542.53	542.53	542.53	1,627.59	1,627.59
JALISCO	50.34	503.36	50.34	50.34	503.36	503.36	503.36	503.36	1,510.07	1,510.07
NOROESTE	61.18	611.85	61.18	61.18	611.85	611.85	611.85	611.85	1,835.54	1,835.54
NORTE	95.81	958.13	95.81	95.81	958.13	958.13	958.13	958.13	2,874.38	2,874.38
ORIENTE	48.41	484.06	48.41	48.41	484.06	484.06	484.06	484.06	1,452.19	1,452.19
PENINSULAR	51.24	512.44	51.24	51.24	512.44	512.44	512.44	512.44	1,537.31	1,537.31
SURESTE	74.84	748.38	74.84	74.84	748.38	748.38	748.38	748.38	2,245.15	2,245.15
VALLE MEXICO CENT	59.10	591.00	59.10	59.10	591.00	591.00	591.00	591.00	1,772.99	1,772.99
VALLE MEXICO NTE	66.36	663.61	66.36	66.36	663.61	663.61	663.61	663.61	1,990.82	1,990.82
VALLE MEXICO SUR	67.67	676.70	67.67	67.67	676.70	676.70	676.70	676.70	2,030.11	2,030.11
MEDIA	58.18	581.82	58.18	58.18	581.82	581.82	581.82	581.82	1,745.45	1,745.45
MIN	39.57	395.68	39.57	39.57	395.68	395.68	395.68	395.68	1,187.03	1,187.03
MAX	95.81	958.13	95.81	95.81	958.13	958.13	958.13	958.13	2,874.38	2,874.38
DESV. EST.	14.14	141.39	14.14	14.14	141.39	141.39	141.39	141.39	424.18	424.18
COEF. VARIACION	24%	24%	24%	24%	24%	24%	24%	24%	24%	24%

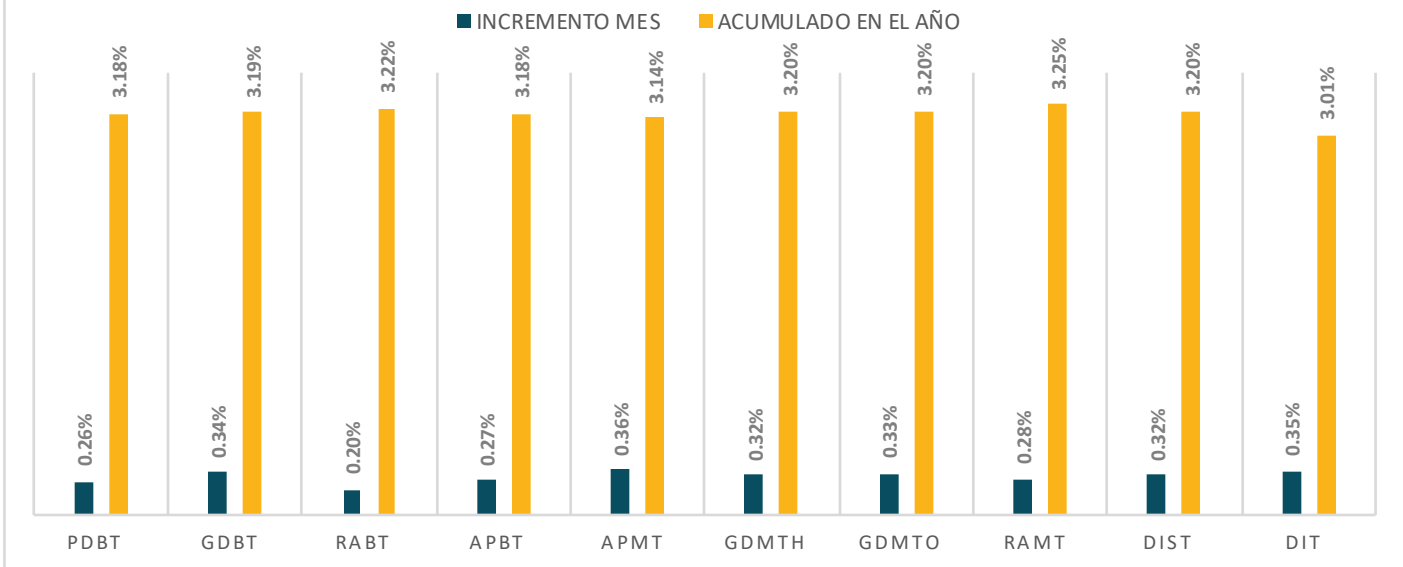
CAMBIO PROMEDIO CARGO FIJO

■ INCREMENTO MES ■ ACUMULADO EN EL AÑO



TARIFAS DE LA CFE APLICABLES EN 06.2019
ENERGÍA BASE \$/kWh

REGIÓN	PDBT	GDBT	RABT	APBT	APMT	GDMTH	GDMTO	RAMT	DIST	DIT
BAJA CALIFORNIA	2.3210	0.7820	1.8550	2.5720	1.6330	0.5582	0.6500	0.7210	0.5932	0.5645
BAJA CALIFORNIA SUR	3.5960	2.7460	2.0900	4.6330	2.6940	1.9036	2.1220	0.9270	2.0594	2.2858
BAJO	3.5220	1.6800	2.3070	3.7870	2.2900	0.9600	1.3980	0.8380	0.9965	0.7878
CENTRO OCCIDENTE	3.4760	1.3190	2.5350	3.8170	2.2800	0.9580	1.2690	0.8370	0.9615	0.8222
CENTRO ORIENTE	3.3910	1.5310	2.5160	3.9610	2.2820	0.9556	1.3800	0.8360	0.9469	0.8671
CENTRO SUR	3.4440	1.4020	2.7260	4.3540	1.8760	0.8790	1.1510	0.8420	0.9867	0.9260
GOLFO CENTRO	3.6420	1.5150	2.4220	3.6900	2.2020	0.9106	1.2330	0.8280	0.9349	0.8854
GOLFO NORTE	3.2480	1.2590	2.1560	3.4310	2.0700	0.9296	1.1520	0.8070	0.9073	0.7388
JALISCO	4.0370	1.3610	2.6930	4.1740	2.2850	0.9229	1.2860	0.8390	0.9798	0.8012
NOROESTE	3.0800	1.3860	2.0450	3.2380	2.1330	0.8828	1.1850	0.8020	0.9070	0.7153
NORTE	3.3810	1.4450	2.5840	3.8730	2.1830	0.9299	1.1290	0.8180	0.8849	0.7944
ORIENTE	3.5010	1.2260	2.6030	3.9920	2.2610	0.8460	1.2040	0.8320	0.9057	0.8885
PENINSULAR	3.6700	1.8960	2.3700	3.9080	2.4030	1.1224	1.5770	0.8700	1.0217	0.9148
SURESTE	3.5120	1.3570	2.4460	3.8640	2.3460	0.9201	1.1630	0.8430	0.9503	0.7383
VALLE MEXICO CENT	3.3760	1.8270	2.0650	3.7100	2.2540	1.0082	1.4490	0.8350	1.0262	0.9329
VALLE MEXICO NTE	3.4140	1.9390	2.3830	4.3970	2.1690	1.0055	1.4170	0.8340	0.7540	0.6017
VALLE MEXICO SUR	3.4310	2.0340	2.3860	4.4900	2.2670	1.0155	1.4620	0.8370	1.0150	0.9366
MEDIA	3.4142	1.5709	2.3636	3.8759	2.2134	0.9828	1.3075	0.8321	0.9901	0.8942
MIN	2.3210	0.7820	1.8550	2.5720	1.6330	0.5582	0.6500	0.7210	0.5932	0.5645
MAX	4.0370	2.7460	2.7260	4.6330	2.6940	1.9036	2.1220	0.9270	2.0594	2.2858
DESV. EST.	0.3455	0.4322	0.2475	0.4962	0.2225	0.2633	0.2929	0.0395	0.2957	0.3752
COEF. VARIACION	10%	28%	10%	13%	10%	27%	22%	5%	30%	42%

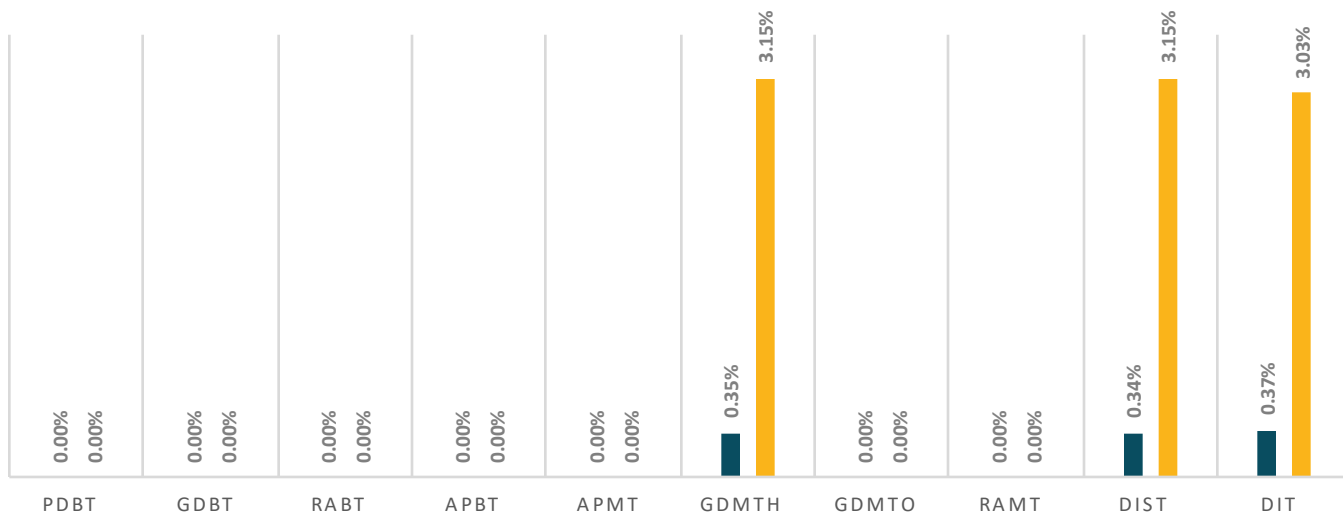
CAMBIO PROMEDIO ENERGÍA BASE


TARIFAS DE LA CFE APLICABLES EN 06.2019
ENERGÍA INTERMEDIA \$/kWh

REGIÓN	PDBT	GDBT	RABT	APBT	APMT	GDMTH	GDMTO	RAMT	DIST	DIT
BAJA CALIFORNIA	-	-	-	-	-	0.8651	-	-	0.9286	0.9522
BAJA CALIFORNIA SUR	-	-	-	-	-	2.4162	-	-	2.6183	2.8604
BAJO	-	-	-	-	-	1.7027	-	-	1.6272	1.4576
CENTRO OCCIDENTE	-	-	-	-	-	1.7050	-	-	1.5708	1.4593
CENTRO ORIENTE	-	-	-	-	-	1.7058	-	-	1.6076	1.4803
CENTRO SUR	-	-	-	-	-	1.5498	-	-	1.6254	1.5866
GOLFO CENTRO	-	-	-	-	-	1.5378	-	-	1.4998	1.5689
GOLFO NORTE	-	-	-	-	-	1.4412	-	-	1.4213	1.2895
JALISCO	-	-	-	-	-	1.6449	-	-	1.6084	1.4628
NOROESTE	-	-	-	-	-	1.4131	-	-	1.3624	1.1922
NORTE	-	-	-	-	-	1.4768	-	-	1.4185	1.3203
ORIENTE	-	-	-	-	-	1.4852	-	-	1.5788	1.4953
PENINSULAR	-	-	-	-	-	1.8875	-	-	1.7411	1.6296
SURESTE	-	-	-	-	-	1.5948	-	-	1.6051	1.3380
VALLE MEXICO CENT	-	-	-	-	-	1.6629	-	-	1.7586	1.6749
VALLE MEXICO NTE	-	-	-	-	-	1.6513	-	-	1.3076	1.0961
VALLE MEXICO SUR	-	-	-	-	-	1.6725	-	-	1.6656	1.6713
MEDIA						1.6125			1.5850	1.5021
MIN						0.8651			0.9286	0.9522
MAX						2.4162			2.6183	2.8604
DESV. EST.						0.2987			0.3310	0.4036
COEF. VARIACION						19%			21%	27%

CAMBIO PROMEDIO ENERGÍA INTERMEDIA

■ INCREMENTO MES ■ ACUMULADO EN EL AÑO

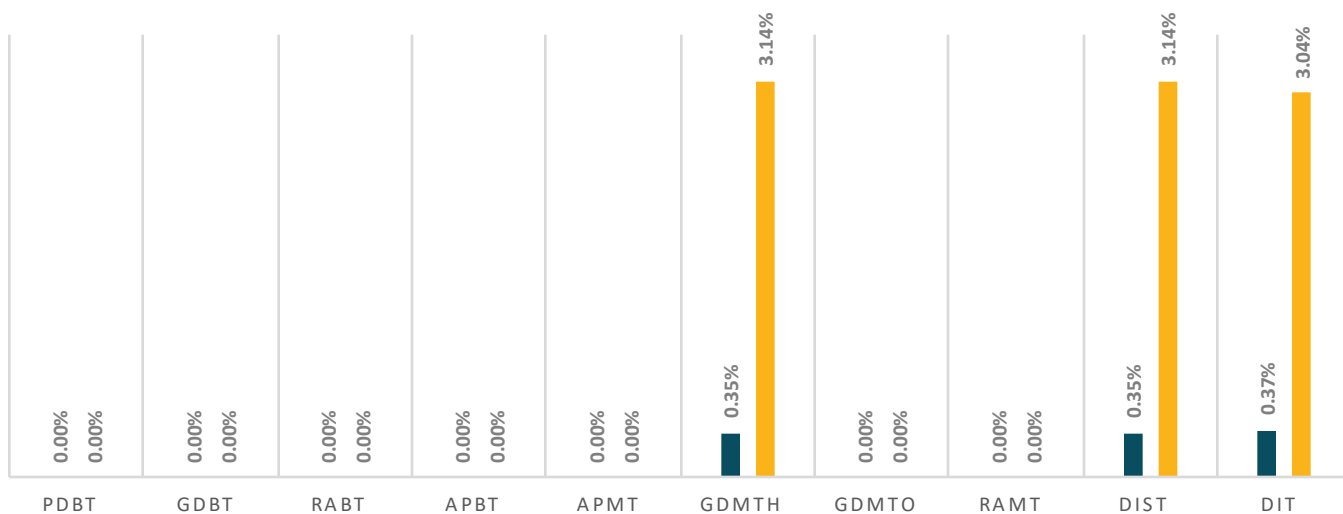


TARIFAS DE LA CFE APLICABLES EN 06.2019
ENERGÍA PUNTA \$/kWh

REGIÓN	PDBT	GDBT	RABT	APBT	APMT	GDMTH	GDMTO	RAMT	DIST	DIT
BAJA CALIFORNIA	-	-	-	-	-	1.1666	-	-	1.2593	1.3305
BAJA CALIFORNIA SUR	-	-	-	-	-	3.4000	-	-	3.6948	4.0721
BAJIO	-	-	-	-	-	1.9395	-	-	1.9295	1.6114
CENTRO OCCIDENTE	-	-	-	-	-	1.9199	-	-	1.8486	1.6372
CENTRO ORIENTE	-	-	-	-	-	1.9249	-	-	1.8126	1.7500
CENTRO SUR	-	-	-	-	-	1.7537	-	-	1.8984	1.8609
GOLFO CENTRO	-	-	-	-	-	1.7815	-	-	1.6923	1.7105
GOLFO NORTE	-	-	-	-	-	1.5638	-	-	1.5423	1.3543
JALISCO	-	-	-	-	-	1.8504	-	-	1.8998	1.6612
NOROESTE	-	-	-	-	-	1.5660	-	-	1.5863	1.3159
NORTE	-	-	-	-	-	1.7276	-	-	1.6621	1.5160
ORIENTE	-	-	-	-	-	1.6679	-	-	1.7744	1.7591
PENINSULAR	-	-	-	-	-	2.1058	-	-	1.9003	1.7487
SURESTE	-	-	-	-	-	1.7883	-	-	1.8535	1.4803
VALLE MEXICO CENT	-	-	-	-	-	1.9412	-	-	1.9883	1.8623
VALLE MEXICO NTE	-	-	-	-	-	1.9298	-	-	1.4720	1.2204
VALLE MEXICO SUR	-	-	-	-	-	1.9553	-	-	1.9542	1.8689
MEDIA						1.8813			1.8687	1.7506
MIN						1.1666			1.2593	1.2204
MAX						3.4000			3.6948	4.0721
DESV. EST.						0.4466			0.5102	0.6325
COEF. VARIACION						24%			27%	36%

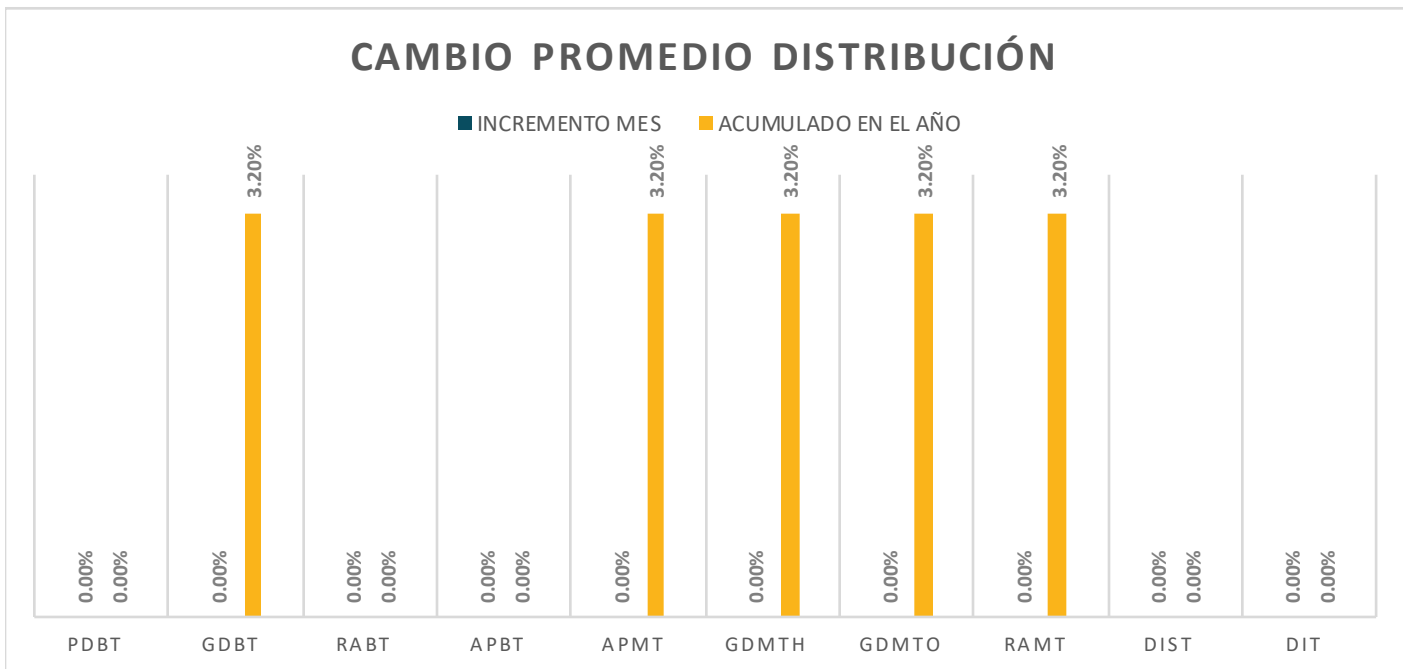
CAMBIO PROMEDIO ENERGÍA PUNTA

■ INCREMENTO MES ■ ACUMULADO EN EL AÑO



TARIFAS DE LA CFE APLICABLES EN 06.2019
DISTRIBUCION \$/kw

REGIÓN	PDBT	GDBT	RABT	APBT	APMT	GDMTH	GDMTO	RAMT	DIST	DIT
BAJA CALIFORNIA	-	186.59	-	-	86.82	86.82	86.82	86.82	-	-
BAJA CALIFORNIA SUR	-	186.59	-	-	86.82	86.82	86.82	86.82	-	-
BAJO	-	356.88	-	-	94.59	94.59	94.59	94.59	-	-
CENTRO OCCIDENTE	-	479.75	-	-	150.00	150.00	150.00	150.00	-	-
CENTRO ORIENTE	-	446.48	-	-	144.32	144.32	144.32	144.32	-	-
CENTRO SUR	-	503.73	-	-	213.42	213.42	213.42	213.42	-	-
GOLFO CENTRO	-	363.05	-	-	120.04	120.04	120.04	120.04	-	-
GOLFO NORTE	-	264.12	-	-	55.81	55.81	55.81	55.81	-	-
JALISCO	-	511.63	-	-	154.70	154.70	154.70	154.70	-	-
NOROESTE	-	205.34	-	-	87.59	87.59	87.59	87.59	-	-
NORTE	-	331.45	-	-	70.50	70.50	70.50	70.50	-	-
ORIENTE	-	487.26	-	-	195.51	195.51	195.51	195.51	-	-
PENINSULAR	-	285.82	-	-	87.62	87.62	87.62	87.62	-	-
SURESTE	-	425.24	-	-	136.64	136.64	136.64	136.64	-	-
VALLE MEXICO CENT	-	236.66	-	-	59.19	59.19	59.19	59.19	-	-
VALLE MEXICO NTE	-	305.14	-	-	84.48	84.48	84.48	84.48	-	-
VALLE MEXICO SUR	-	294.13	-	-	65.97	65.97	65.97	65.97	-	-
MEDIA		345.29			111.41	111.41	111.41			
MIN		186.59			55.81	55.81	55.81			
MAX		511.63			213.42	213.42	213.42			
DESV. EST.		113.02			47.13	47.13	47.13			
COEF. VARIACION		33%			42%	42%	42%			

CAMBIO PROMEDIO DISTRIBUCIÓN


TARIFAS DE LA CFE APLICABLES EN 06.2019

REGIÓN	CAPACIDAD \$/kW									
	PDBT	GDBT	RABT	APBT	APMT	GDMTH	GDMTO	RAMT	DIST	DIT
BAJA CALIFORNIA	-	282.30	-	-	-	324.47	309.10	139.74	355.47	364.16
BAJA CALIFORNIA SUR	-	239.80	-	-	-	232.59	237.67	139.74	259.37	301.27
BAJO	-	275.55	-	-	-	355.47	306.01	139.74	364.16	364.16
CENTRO OCCIDENTE	-	235.74	-	-	-	355.33	269.65	139.74	364.16	364.16
CENTRO ORIENTE	-	248.02	-	-	-	352.17	303.46	139.74	364.16	364.16
CENTRO SUR	-	219.09	-	-	-	330.71	237.98	139.74	364.16	364.16
GOLFO CENTRO	-	275.55	-	-	-	355.47	290.97	139.74	364.16	364.16
GOLFO NORTE	-	241.87	-	-	-	364.16	309.10	139.74	364.16	364.16
JALISCO	-	221.29	-	-	-	355.47	282.35	139.74	364.16	355.47
NOROESTE	-	282.30	-	-	-	355.47	309.10	139.74	364.16	355.39
NORTE	-	275.55	-	-	-	364.16	282.35	139.74	364.16	364.16
ORIENTE	-	204.70	-	-	-	326.29	263.84	139.74	364.16	364.16
PENINSULAR	-	275.55	-	-	-	355.47	300.33	139.74	351.61	347.68
SURESTE	-	225.09	-	-	-	312.67	234.49	139.74	355.47	315.68
VALLE MEXICO CENT	-	282.30	-	-	-	364.16	315.23	139.74	364.16	364.16
VALLE MEXICO NTE	-	270.84	-	-	-	364.16	309.10	139.74	355.47	355.47
VALLE MEXICO SUR	-	275.55	-	-	-	364.16	316.67	139.74	364.16	364.16
MEDIA		254.77				343.08	286.91	139.74	355.72	355.10
MIN		204.70				232.59	234.49	139.74	259.37	301.27
MAX		282.30				364.16	316.67	139.74	364.16	364.16
DESV. EST.		26.54				32.73	28.43	-	25.19	18.39
COEF. VARIACION		10%				10%	10%	0%	7%	5%

CAMBIO PROMEDIO CAPACIDAD
